

FISHER

**Specializing in
field-erected
steel storage
tanks**

Modifications, Repairs and Maintenance

For a half-century, Fisher Tank Company has performed a dual service for owners of above-ground steel storage tanks. We are, perhaps, best known as a leading manufacturer of high quality field-erected steel tanks. From the outset, however, a companion service — the repair, modification and maintenance of ASTs — has been an effective and respected part of Fisher Tank operations.

enced and conscientious foremen. All work is performed in strict compliance with applicable safety requirements.

- Shell patches or replacements
- Bottom replacements
- Roof plate repair and replacement
- Pit welding of corroded areas
- Floating roof seal replacements



Full Service, Value-Added

As a full service company, we're particularly well equipped to handle your repair and modification projects. Our staff of experienced contracting and design

engineers stand ready to provide you with the best in value engineering services. At both our Chester, PA and Lexington, SC plants, we maintain fully equipped fabricating facilities, backed by extensive inventories of steel plate, pipe and assorted fittings. These added-value capabilities enable us to respond expertly, quickly and cost effectively to your most pressing repair and modification project.

Repairs

All repair work is performed by ASME-certified welders, who work under the supervision of experi-

Modifications

Changes in a tank's use, new environmental requirements, the need to increase capacity and technological innovations are just





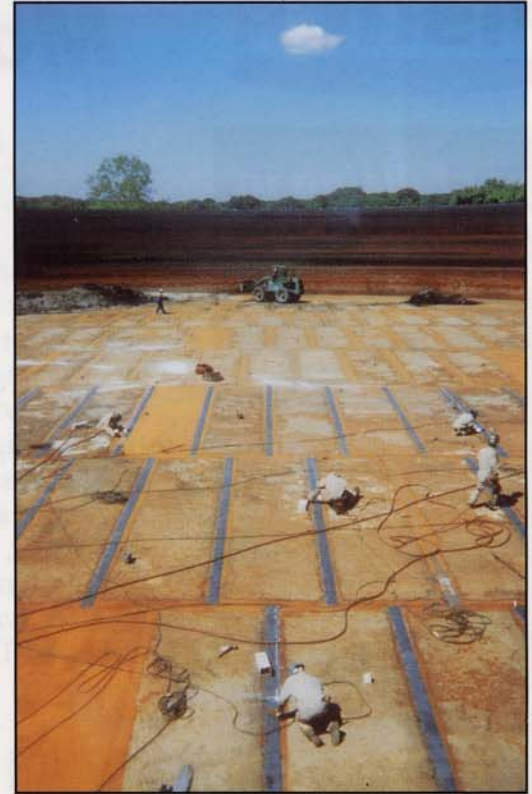
a few of the developments that can trigger tank modifications. At Fisher Tank, we are prepared to undertake virtually any modification project, including:

- Leak detection and secondary containment
- Adding nozzles or other fittings

Maintenance

From complete API or AWWA design to finish tank painting, Fisher Tank provides 100% of what you need to keep your tanks operationally safe and sound. Flexible maintenance agreement plans, tailored to your specific needs, are also available.

- Increasing tank capacity
- Installation of a new floating roof in an existing tank
- Installation of double bottoms
- Lump sum contract
- Time & material
- Maintenance agreements
- Partnering agreements



On-the-Job Safety: Our First Priority

"Safety, quality and productivity...in that order." Those are the principles we put into practice everyday and on every job. Whether we are erecting a new tank or repairing an existing tank, nothing takes precedence over job safety. Our crews undergo intensive training in programs specially designed

by our own safety director; in addition, personnel are qualified with the backing of the NTL Boilermakers' MOST program. We are also prepared to comply with OSHA 1910 training requirements or any other safety requirements specific to your plant. ■

For more information call, fax, write or E-Mail:



3131 W. Fourth Street • Chester, PA 19013 • PH: (610) 494-7200 • FAX: (610) 485-0157
2330 Two Notch Road • Lexington, SC 29072 • PH: (803) 359-4173 • FAX: (803) 957-3376
3600 Martin Street South, Suite 12 • Cropwell, AL 35054 • PH: (205) 814-1709 • FAX: (205) 814-1648
E-Mail: sales@fishertank.com • Website: www.fishertank.com